

# Nivz Valves & Automation

## Flush Bottom Ball Valve

DRG. No.: FXBTV

00  
Rev. No.

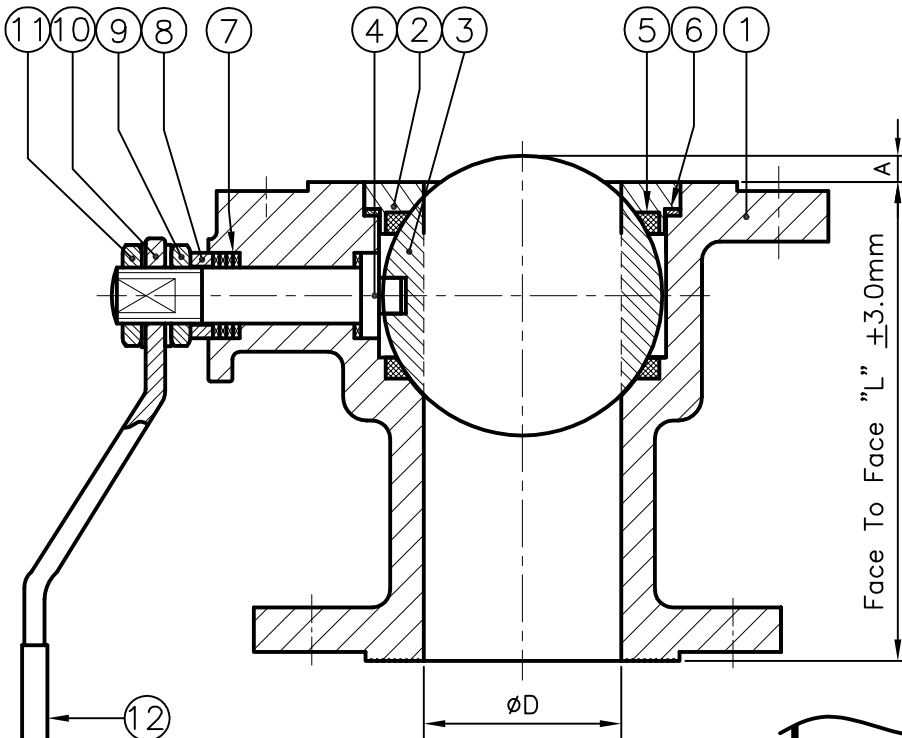
### FEATURES

- \* Low Operating Torque
- \* Leak Tight Stem Sealing

Pressure Rating : 150 #  
 End Connection : Flanged End, RF  
 Flange Drilling : As Per ANSI B 16.5, Class 150  
 Face To Face : As Per ANSI B 16.10  
 Operation : Manual Hand Lever Operated

### Nomenclature:-

NO.	PART NAME	MATERIAL
1	Body	A 216 GR. WCB
2	Insert	A 351 GR. CF8/CF8M/CF3/CF 3M
3	Ball	AISI 304/316/304L/316L/CF8/8M/3/3M
4	Stem	AISI 304/316/304L/316L
5	Ball Seat	P.T.F.E.(VIRGIN)/GFT/CARBON FILLED
6	Body Seal	P.T.F.E.(VIRGIN)/GFT/CARBON FILLED
7	Gland Seal	P.T.F.E.(VIRGIN)/GFT/CARBON FILLED
8	Gland Bush	AISI 304/316/304L/316L
9	Gland Nut	C.S./194 GR. 2H/S.S. 304/316
10	Hand Lever	CARBON STEEL/S.S.
11	Hand Lever Nut	C.S./194 GR. 2H/S.S. 304/316
12	Lever Sleeve	P.V.C.



Design Standard : BS EN ISO 17292

Dimensions [150 Class]

SIZE	40x25	50x40	65x50	80x50	80x65	100x80
Vessel Side	40	50	65	80	80	100
Outlet Side	25	40	50	50	65	80
L	107.95	117.35	127	127	139.1	165
A	---	---	1.3	1.3	2.0	3.0
øD	25	38	50	50	63	75

All Dimensions Are In mm

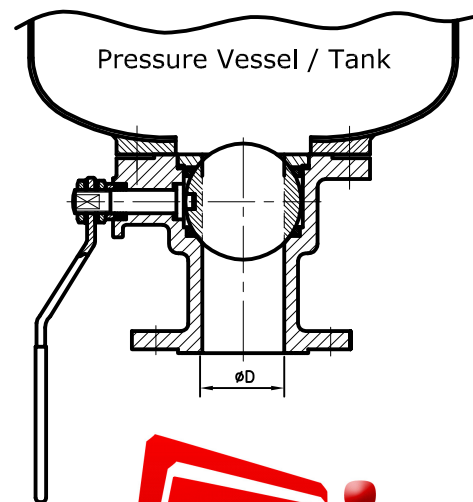
### Note:

- \* Vessel Side Connecting Flange of Valve Will Be One Size Higher Compare To Outlet Side.

Testing Standard : BS 6755-I

Test Pressure in PSIG/BAR/KG./CM<sup>2</sup>

Test	Hydrostatic			Air		
	Pr. Rating	150#				
Body	425	29.3	30			
Seat	300	20.7	21	80	5.5	5.6



**nivz**™

VALVES & AUTOMATION  
[www.nivzvalves.com](http://www.nivzvalves.com)

Client \_\_\_\_\_

Order / Enq. No. \_\_\_\_\_

Job / Project \_\_\_\_\_

Manufactured By : **Nivz Valves & Automation**, Ahmedabad, Gujarat, INDIA.

Due to continuous development programme, the design and data given in this leaflet are subject to change without prior notice

Appd. \_\_\_\_\_

Chkd. \_\_\_\_\_

Drwn. \_\_\_\_\_

For Record

For Reference

For Approval