

Nivz Valves & Automation

Forged Globe Valve, Rating - 800#

DRG. No.: **FGL80**

00
Rev. No.

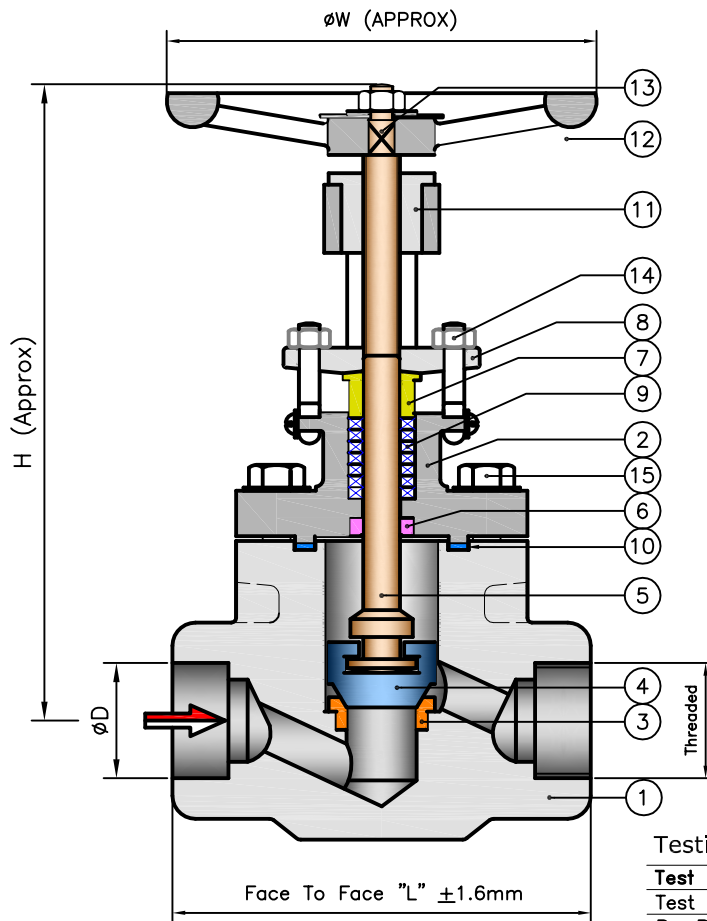
Pressure Rating : 800 #
End Connection : Socket Weld End/Screwed End
Socket Weld : As Per ANSI B 16.11
Screwed End : As Per ASME B 1.20.1
Face To Face : As Per ANSI B 16.10
Port Opening : Reduce Port

Nomenclature:-

NO.	PART NAME	MATERIAL
1	BODY	A 105/
2	BONNET	A 182 F 304/316/304L/316L
3	SEAT RING	A 276 T-410/304/316/304L/316L
4	DISC	ASTM A 217 GR. CA 15/ A 276 T-410/304/316/304L/316L
5	STEM	A 276 T-410/304/316/304L/316L
6	BACK SHEET BUSH	A 276 T-410/304/316/304L/316L
7	GLAND BUSH	A 276 T-410/304/316/304L/316L
8	GLAND FLANGE	ASTM A 105/182 F 304/316
9	GLAND PACKING	GRAFOIL/PTFE/BRAIDED ASBESTOS
10	GASKET	S.S. SPIRAL WOUND WITH CAF/GRAPHITE/PTFE
11	YOKE NUT	C.S.
12	HAND WHEEL	CAST IRON/S.G. IRON/C.S.
13	HAND WHEEL NUT	C.S./S.S. 304
14	EYE BOLT & NUT	C.S./S.S. 304
15	BODY-BONNET BOLT	A 193 GR. B7/S.S. 307

FEATURES

- * Deep Stuffing Box
- * Graphite Ring Ensures Effective Stem Sealing
- * Self Aligning Two Piece Gland
- * Hardened Back Sheet For Max. Service Life
- * Seat & Disc Stellite Hard Face [Optional]



Testing Standard : BS 6755-I/API 598

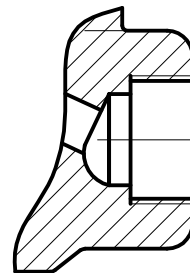
Test	Hydrostatic			Air		
	Pr. Rating 800#					
Body	3000	207	211			
Seat	2000	138	141	80	5.5	5.6
Back Seat	2000	138	141			

Design Standard : BS 5352/API 602/
ASME B 16.34

DIMENSIONS [800 Class]

SIZE	15	20	25	32	40	50
L	90	94	108	126	126	142
ϕD	21.7	27.1	33.8	42.5	48.6	61.1
H	165	173	192	254	254	275
ϕW	95	95	95	150	150	150

All Dimensions Are In mm



**BSP/BSPT/NPT
THREADED END**



VALVES & AUTOMATION
www.nivzvalves.com

Client _____
Order / Enq. No. _____
Job / Project _____
Manufactured By : **Nivz Valves & Automation**, Ahmedabad, Gujarat, INDIA.

Do Not Copy Drawing
©COPYRIGHT

Due to continuous development programme, the design and data given in this leaflet are subject to change without prior notice

Appd. _____

Chkd. _____

Drwn. _____

For Record

For Reference

For Approval