

# Nivz Valves & Automation

**Forged Lift Check Valve, Rating - 800#**

DRG. No.: FLC80/FLC80S

00  
Rev. No.

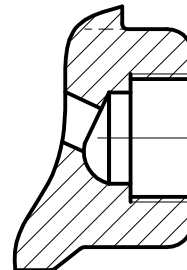
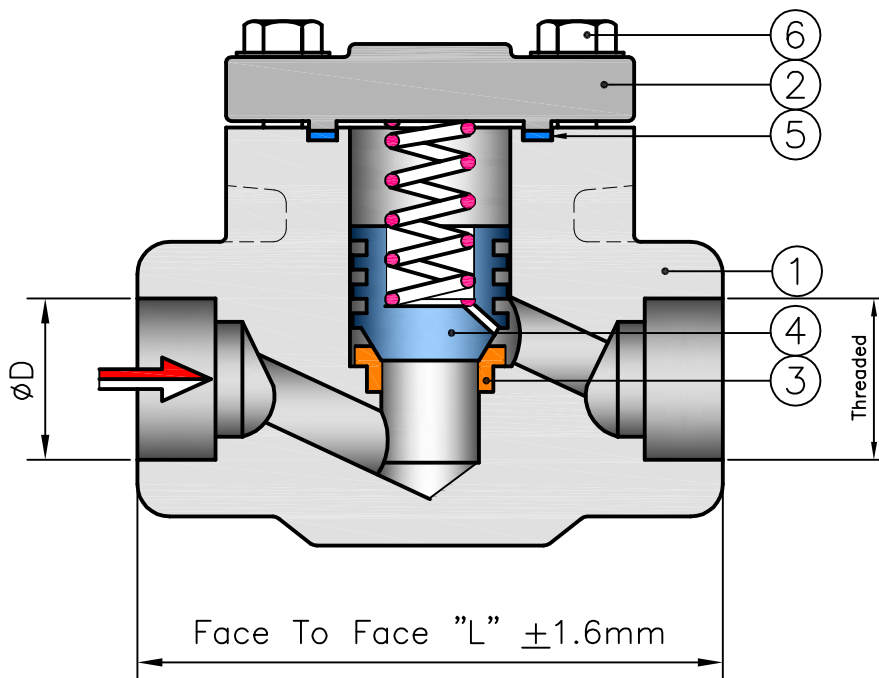
Pressure Rating : 800 #  
End Connection : Socket Weld End/Screwed End  
Socket Weld : As Per ANSI B 16.11  
Screwed End : As Per ASME B 1.20.1  
Face To Face : As Per ANSI B 16.10  
Port Opening : Regular Port

**Nomenclature:-**

NO.	PART NAME	MATERIAL
1	BODY	ASTM A 105/
2	COVER	ASTM A 182 F 304/316/304L/316L
3	SEAT RING	A 276 T-410/304/316/304L/316L
4	PISTON DISC	A 276 T-410/304/316/304L/316L
5	GASKET	S.S. SPIRAL WOUND WITH CAF/GRAPHITE/PTFE
6	BODY-COVER BOLT	A 193 GR. B7/SS 304/316

**FEATURES**

- \* Bolted Cover Design
- \* Piston Type Disc
- \* Seat & Disc Steelited Hard Face (Optional)
- \* Suitable For Horizontal Line ONLY



**BSP/BSPT/NPT  
THREADED END**

Testing Standard : BS 6755/API 598

Test Pressure in PSIG/BAR/KG./CM <sup>2</sup>			
Test	Hydrostatic		
Pr. Rating	800#		
Body	3000	207	211
Seat	2000	138	141

Design Standard : BS 5352/API 602/  
ASME B 16.34

DIMENSIONS [800 Class]

SIZE	15	20	25	32	40	50
L	90	94	108	126	126	142
øD	21.7	27.1	33.8	42.5	48.6	61.1

All Dimensions Are In mm



**VALVES & AUTOMATION**  
[www.nivzvalves.com](http://www.nivzvalves.com)

Client \_\_\_\_\_  
Order / Enq. No. \_\_\_\_\_  
Job / Project \_\_\_\_\_  
Manufactured By : **Nivz Valves & Automation**, Ahmedabad, Gujarat, INDIA.

Do Not Copy Drawing  
©COPYRIGHT

Due to continuous development programme, the design and data given in this leaflet are subject to change without prior notice

Appd. \_\_\_\_\_  
Chkd. \_\_\_\_\_  
Drwn. \_\_\_\_\_

For Record

For Reference

For Approval